



INTERIORS & LIGHTING DESIGN SERVICES

COMPANY PROFILE 2015

Beirut - Lebanon | P.O.Box 45-203

T +961 5 458909

M +961 3 695310

Doha - Qatar

M +974 66 465402

Dubai - U.A.E

M +971 50 3432589

info@ipdesignuae.com



profile

IP Design is a Lighting Design firm established in 2007 to provide complete lighting design solutions with a highly creative and professional design service.

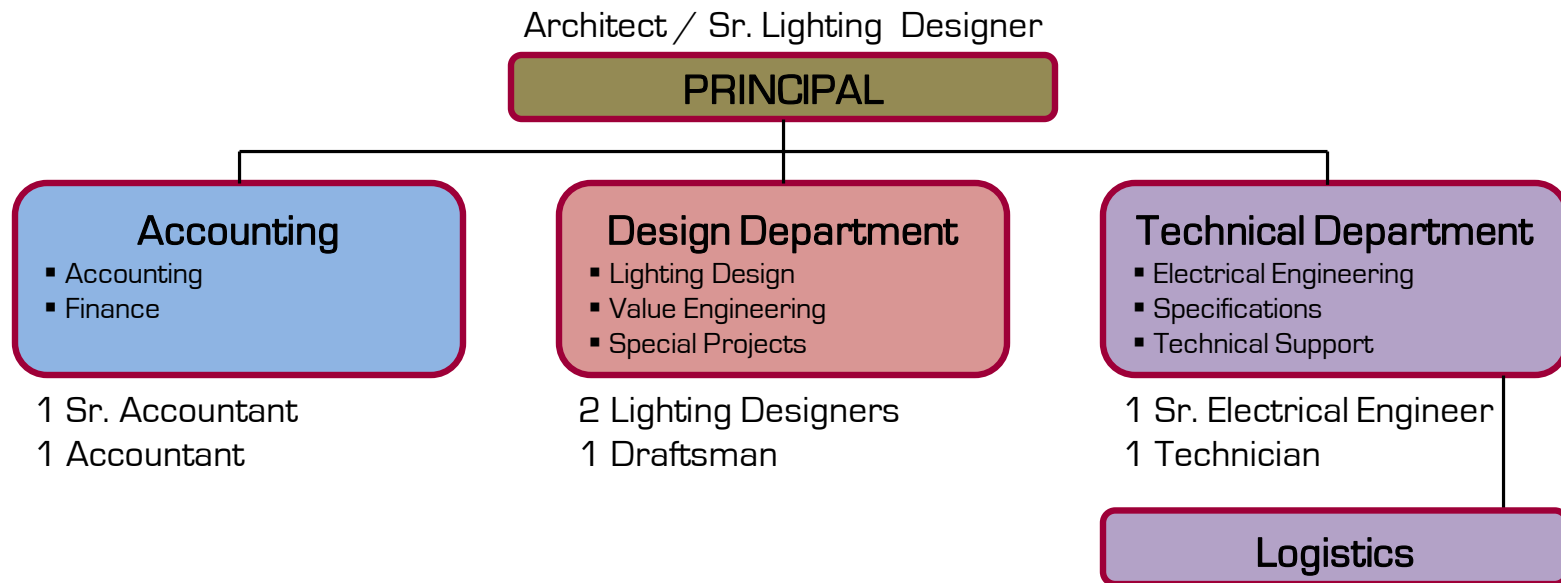
Our services cover all aspects of Lighting Design ranging from consultancy and value engineering to full design documentation; it includes a numerous variety of building types, interior and exterior spaces as well as facades and structures.

We believe that lighting enhances the visibility, utility and visual comfort of architectural spaces. Therefore, our cost-effective designs integrate innovation, flexibility and energy-conscious solutions; always contributing to the success of any project in harmony with its surroundings.



organization chart

IP Design's main office is based in Beirut - Lebanon (Management & Design Force)
Remote offices are located in Dubai - UAE & Doha - Qatar.





company registration

الجمهورية اللبنانية
 وزارة المصارف
شهادة تسجيل شركة

اسم الشركة: اي بي ديزاين ش م ل
 الشهرة التجارية: IP DESIGN

عنوان المركز الرئيسي
 شارع: السفارة اللبنانية
 مسقط: DELOUP
 رقم التسجيل: ٢٣٠٧٧٦٣

أعطيت في: ٢٠١٠-٠٧-٢٧

مدير التوردات
 لوي الحاج شحادة

الجمهورية اللبنانية
 وزارة المصارف
بطاقة تسجيل شركة

اسم الشركة: اي بي ديزاين ش م ل
 الشهرة التجارية: IP DESIGN

مدير التوردات
 لوي الحاج شحادة



الجمهورية اللبنانية
 عدد: ٢٠١٦٠٤
شهادة تسجيل شركة

ان رئيس قلم السجل التجاري لدى محكمة الدرجة الاولى في بعيدا يثبت ان للشركة
 المعطلة للبيانية المعروفة باسم:
 أي بي ديزاين شركة
 IP Design SAL

قد تقيمت بتاريخ ٢٠١٠ سنة ٢٠ في السجل التجاري في بعيدا برقم ٤٠٠٤٦٦٠٤
 وفقاً للمادتين ٤٦ و ٤٩ من قانون تجارة.

وعليه، قد أعطيت هذه الشهادة بناء لطلب السيد صمد ديب ديب ليعمل بها حسب
 مقتضى القانوني.

بعيدا في

٢٠١٠ سنة ٢٠

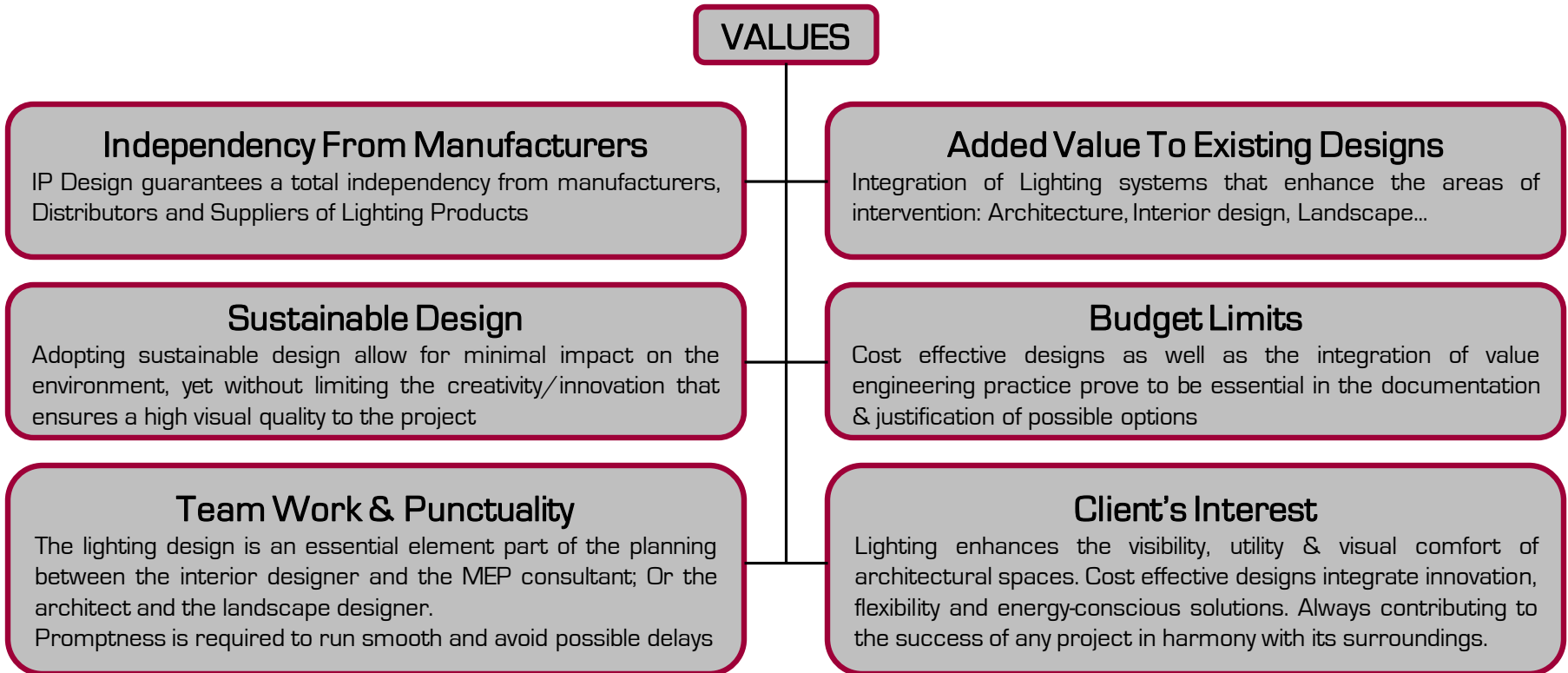
القاضي المشرف

رئيس القلم
 ليليان متا



design methodology

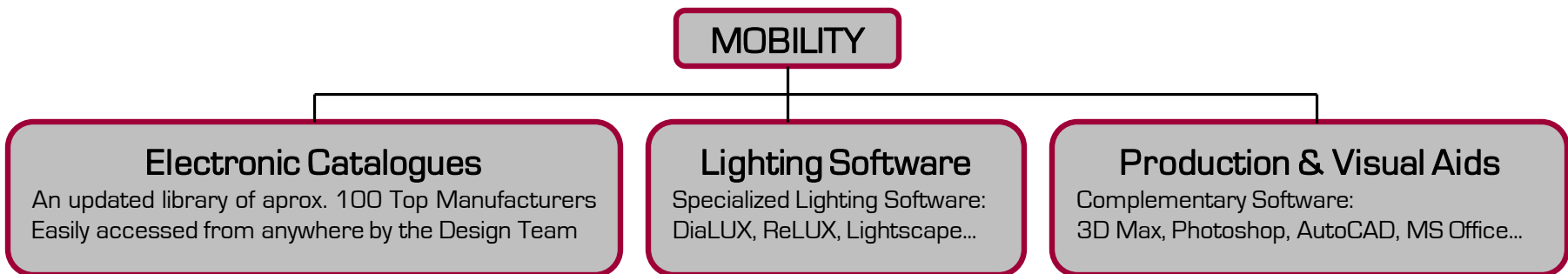
IP Design's work methodology abides by a set of Values that are critical for maintaining our commitment to Design Excellence :





technology & resources

IP Design's structure and resources added to the portable skills & technologies adopted, allow for much needed design & production flexibilities capable of operating anywhere in the world with total mobility:

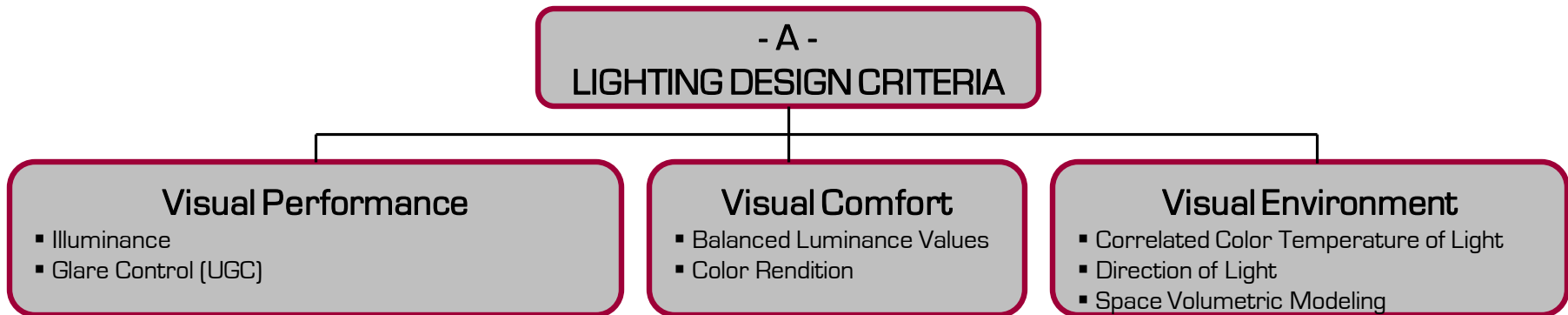




lighting design quality

A. Lighting Design Criteria

Lighting designs provided by **IP Design** shall comply with the following criteria:



As defined and recommended by European & US Standards methodologies, such as, but not limited to:

- IESNA Handbook 9th Edition
- CIE
- DIN 5035

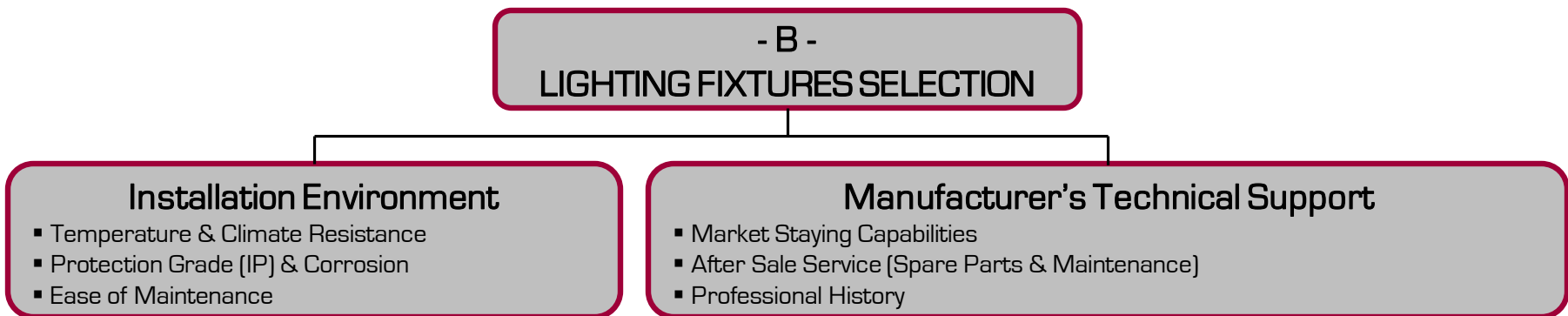




lighting design quality

B. Lighting Fixtures Selection

The selection of lighting fixtures should take into consideration:





lighting design quality

C. Lighting Fixtures Locations (Distribution)

The lighting designer shall verify that the Lighting Fixtures' Distribution complies with the following guidelines:

- C - LIGHTING FIXTURES LOCATIONS

Interference with Other Building Services

Lighting Fixtures should not interfere with fixtures from other building services such as HVAC Registers & Ducts, Fire systems (smoke detectors & sprinklers), Speakers, CCTV, Alarm Systems Conduits (cables & pipes), Beams, etc...

Clearance & Provisions

Recessed Lighting Fixtures shall be compatible with suspended ceiling types (False Ceilings & Decorative Elements), as well as Plenum Depth (A/C Ducts)

Accessibility & Maintenance

Lighting Fixtures should be well located to ensure easy access for Safety, Maintenance & Bulb Changing Tasks

Spacing & Ventilation

Lighting Fixtures should have proper spacing to allow for an air gap envelop and ensure good ventilation to avoid fire hazards and heat build-up



lighting design quality

D. Energy & Environment

Depending on the client's requirements, the Lighting Designer shall make sure that the lighting systems comply with one or several specific energy and environmental protection programs such as, but not limited to:

- International Dark-Sky Association and Lighting Pollution
- ASHRAE/IESNA Standard 90.1-2007
- LEED NCv2.2



E. CAD Standards

The lighting designer shall verify that the CAD Standards comply with the lead consultant's standards in order to guarantee a seamless integration of the lighting documents into the Tender Documents binder



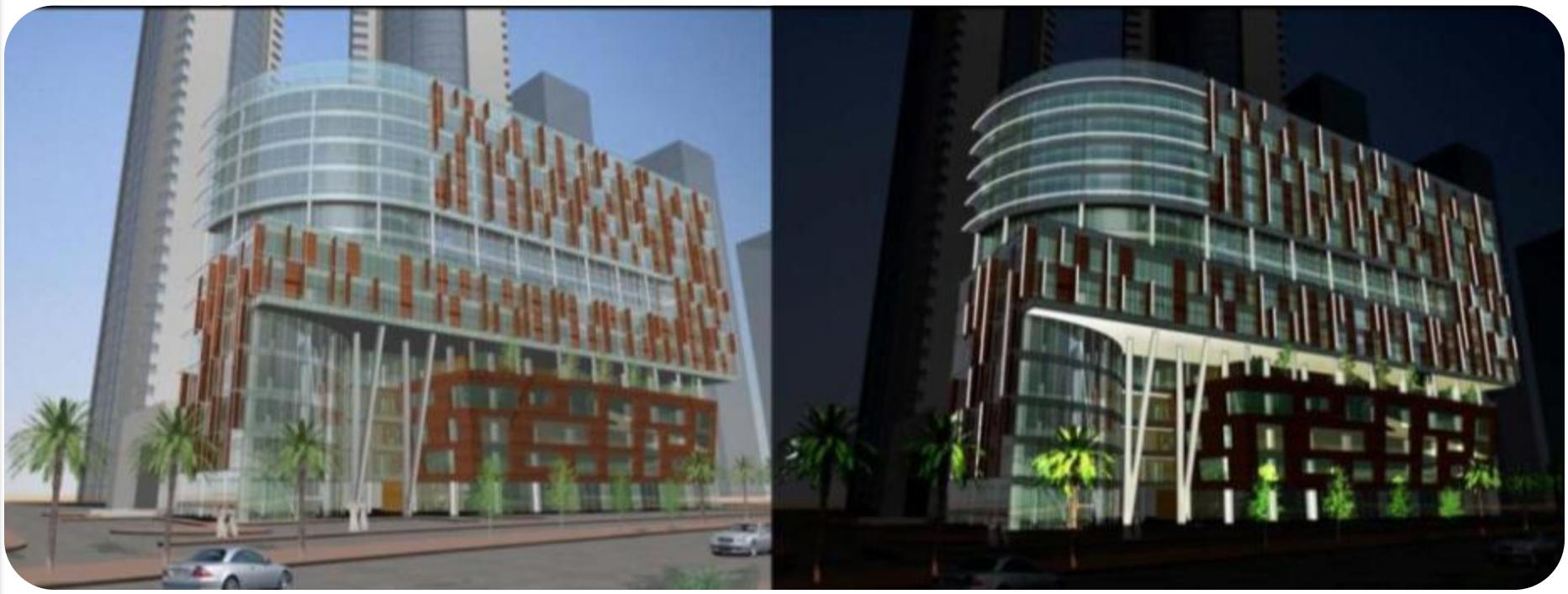
façades lighting designs selection



lebanon



bahrain



dubai



dubai



dubai



dubai



dubai



dubai



qatar



qatar

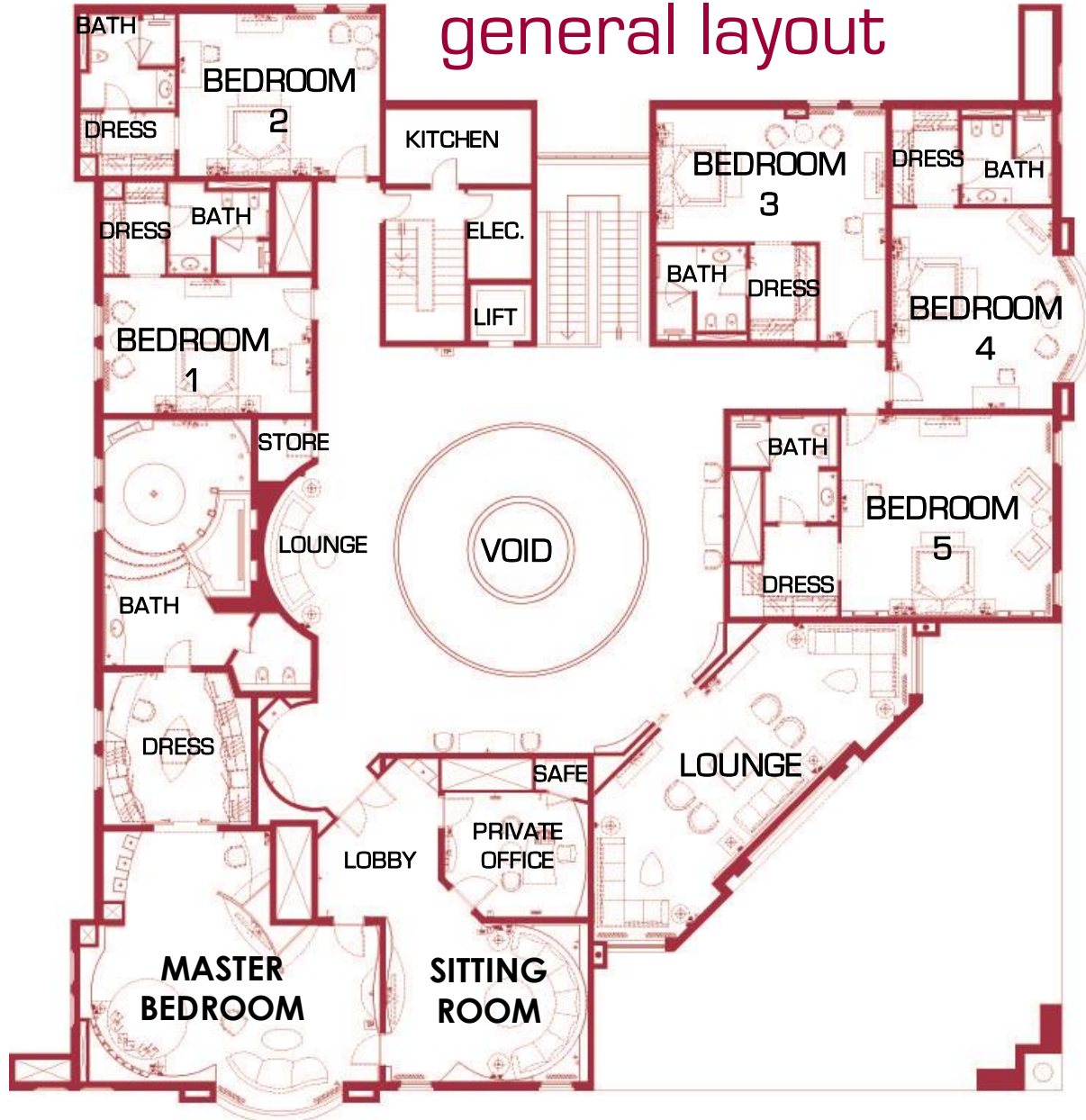


interior lighting design

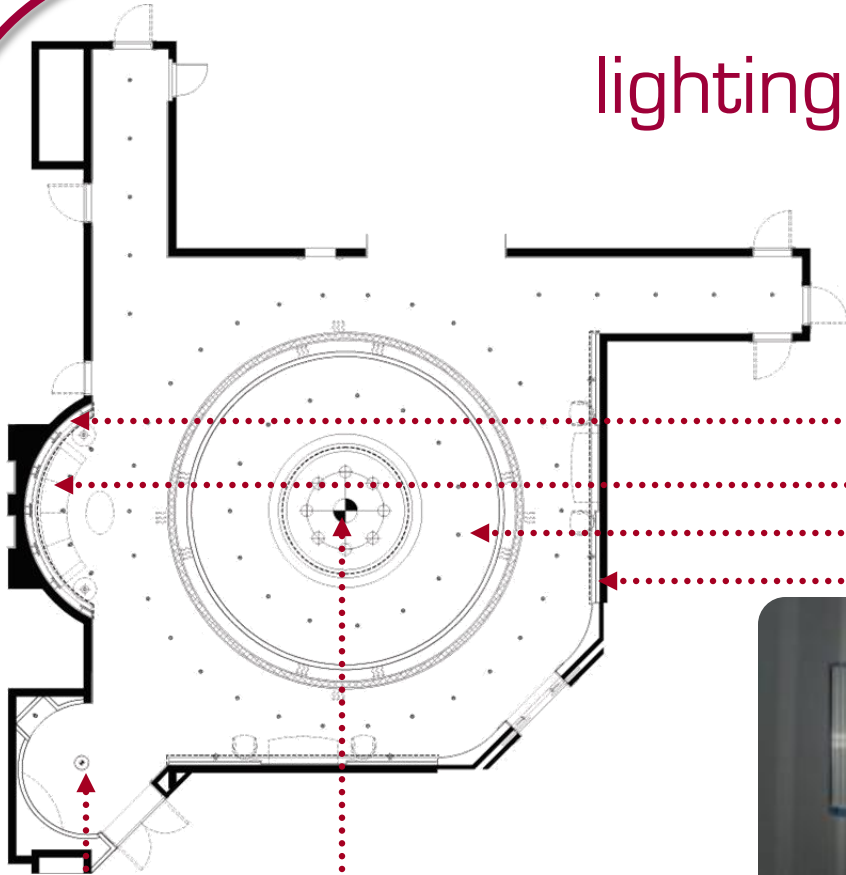
sample presentation



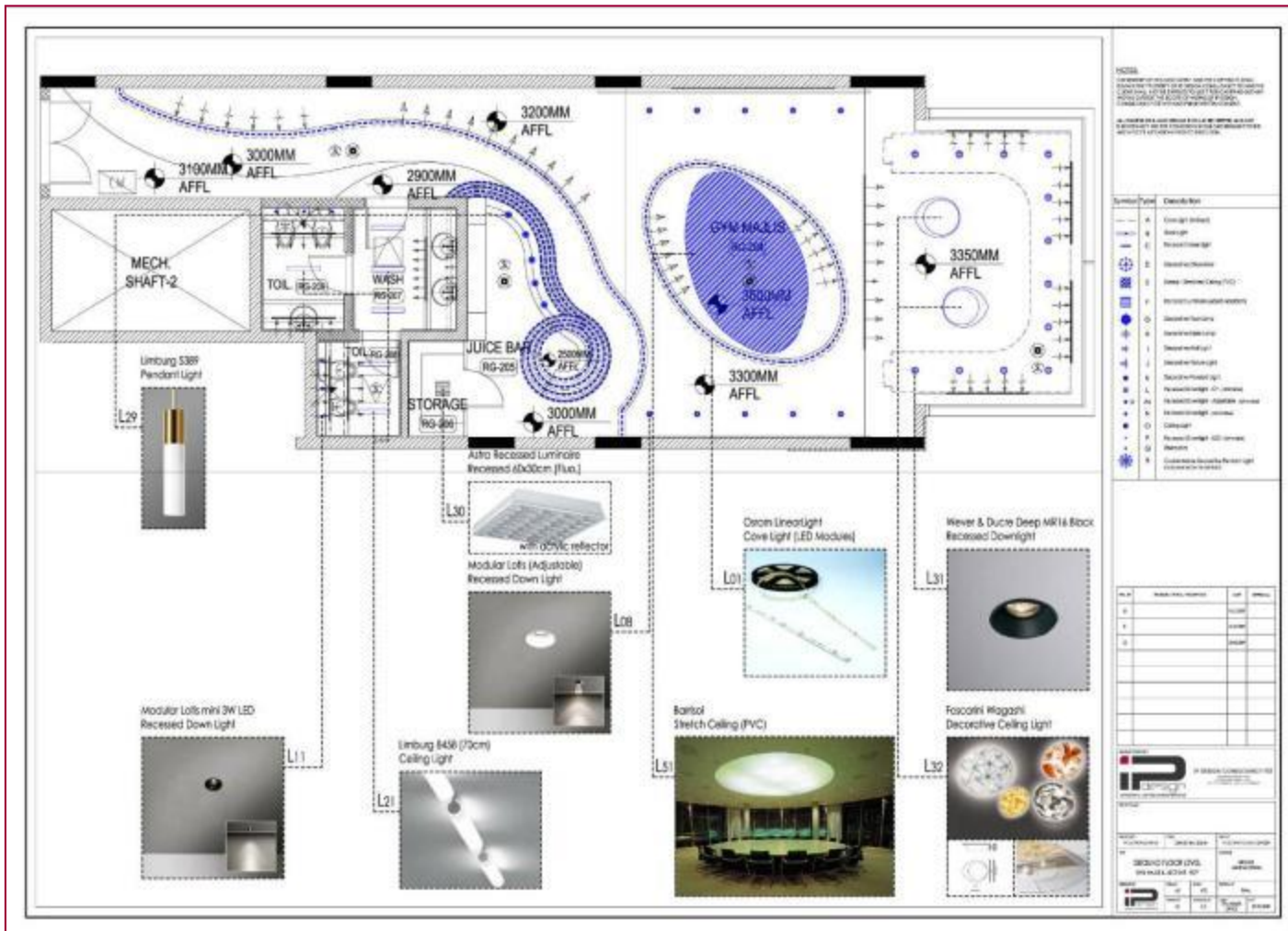
general layout



lighting selection



lighting layout sheet



The project will be divided into the different spaces that constitute it; where each space will have its own *Lighting Layout Sheet* comprising the following:

- Lighting design layout distribution with the relevant Legend (symbol, type, description...)
- Lighting fixtures selection (pictures, descriptions, reference numbers...)



luminaire specification sheet

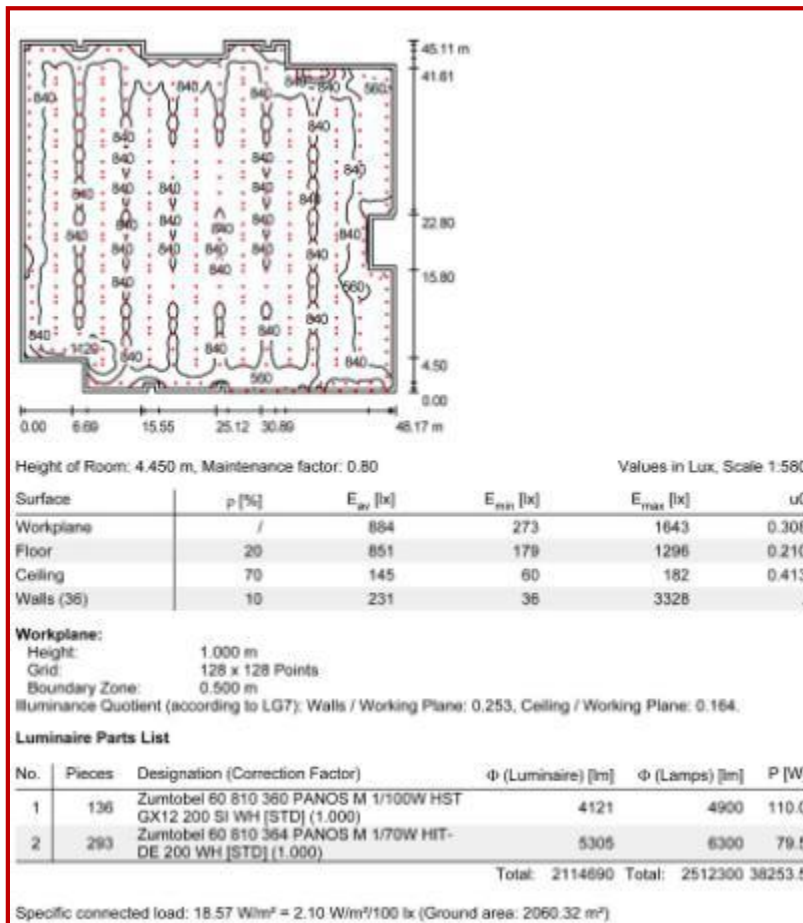
PROJECT:		SARAYAT AL SHARQ (SHOPPING MALL)		TYPE:	
ARCHITECT:		LASHINS OULDSAN		L7(a/b)	
1 st ISSUE DATE:		04.10.2010			
REVISION:	1	ISSUE DATE:	04.10.2010		
PHASE:		CASE STUDY			
DESCRIPTION:					
With a system light output of 63 to 77 lumens/watt, PANOS INFINITY is more efficient than conventional downlights by an average of 70 %. At a comparable system output of 2 x 26 W, these offer only 40 lumens/watt. The excellent efficiency is achieved through high-grade materials and innovative technologies that are combined within the control system of PANOS INFINITY.					
LOCATION:					
Atrium Foyer (lobbies) - Ceiling Recessed & in Trough Area					
PICTURE - DRAWING - PHOTOMETRIC DATA					
LUMINAIRE DATA					
CAT No.	NO 812 621	LAMP TYPE	LED		
MANUFACTURER:	Dornbracht - Germany	NUMBER OF LAMPS:	1		
MODEL:	Panos infinity E150 U LED	WATTAGE:	27W		
HOUSING:	Recessed (depth 100mm)	BASE:			
FINISH:	white	COLOR/TEMP:	4000K (var. Neutral White)		
IP GRADE:	IP 44	LOAD (incl. control gear):	27W		
ACCESSORIES:	Ceiling Ring/Anti-Glare Ring	CONTROL GEAR:	Integrated/DALI		
NOTES:	The service life of PANOS INFINITY amounts to 50,000 hours and above, meaning in practice that no relamping is required. This means that the LED downlight maintenance costs are almost zero.				

Each lighting fixture selected will have its own *Luminaire Specification Sheet* which will include:

- Description of the lighting fixture
- Location in the project
- Picture, Drawings and Photometric data (if available and/or needed)
- Luminaire Data (manufacturer, model No., finishing, IP, lamp type, wattage...)



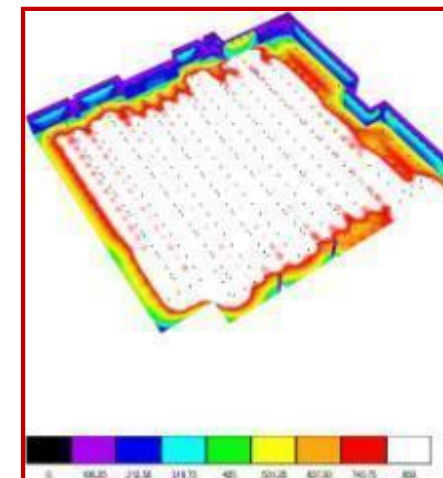
lighting calculations



Lux Level Calculation



Rendering



False Color Rendering

Lighting Calculations shall be carried on where the Lux Level proves to be critical and/or essential to ensure good visibility, utility and visual comfort of the architectural spaces.

It is important to note that the lux level calculations comprise architectural/technical lights and excludes all decorative lighting fixtures.

lighting fixtures schedule

SCHEDULE OF LIGHTING FIXTURES									
TYPE	AREA OF INTERVENTION	DESCRIPTION	MANUFACTURER	MODEL	IMAGE	NUMBER OF LAMPS	LAMP TYPE	LOAD (including ballast and ballastless)	QUANTITY
01	Office	Chandelier with metallic and glass light fixture.	SHO	SHO-01		1	LED		1
02	Office (Reception) 20 Rooms (L3) Master Bedroom (04B)	Clip-on bedside lamp with a metal frame and a glass globe.	UCOBI	UCOBI-01		100	LED		100
03	Office	Small rectangular pendant lamp with a metal frame and a glass globe.	RECO	RECO-01		1	Halogen E14	20W	1
04	Master Bedroom (04B)	Pendant lamp with a metal frame and a glass globe.	LANEKO	LANEKO-01		1	LED E27	10W	1
05	Master Bedroom (bedroom lounge)	Chandelier with a metal frame and a glass globe.	LANEKO	LANEKO-02		1	Halogen E14	20W	1
06	Master Bedroom (bedroom)	Adjustable suspension lamp with a metal frame and a glass globe.	LANEKO	LANEKO-03		1	Halogen E14 E27	20W	1

All the lighting fixtures selected will be summarized in a *Lighting Fixture Schedule* (part of the tender Documents) which will include all the needed information in regards to the lighting selection (Type, Area of Intervention, Description, Manufacturer, Model, Image, Number of Lamps, Lamp Type, Load, Quantities...).



References

exterior lighting design

<u>PROJECT</u>	<u>CLIENT</u>	<u>TYPE</u>	<u>LOCATION</u>	<u>YEAR</u>
AL TAL Clock Tower	Tripoli Municipality	Monument	Lebanon	2006
Dana Residential Bldg.	N/A	Residential	Lebanon	2006
Sayah Tower	N/A	High-Rise	U.A.E.	2006
EKO Hotel	N/A	Hotel	Africa	2006
Al Misnad Villas	MZ & Partners	Residential	Qatar	2006
Orchid Tower	Agostine & Rapahel Gr.	High-Rise	U.A.E.	2007
Al Zahra Hospital	N/A	Hospital	U.A.E.	2007
Al Fattan Office Building	DSA Architects Int'l.	Offices	U.A.E.	2007
Chelsea Hotel	N/A	Hotel	U.A.E.	2007
Ocean Heights	DAMAC Properties	High-Rise	U.A.E.	2007
JLT-Z Cluster	Nakheel	High-Rise	U.A.E.	2007
JLT U2 Tower	Deyaar Development	High-Rise	U.A.E.	2007
Paradise Tower	Agostine & Rapahel Gr.	High-Rise	U.A.E.	2007
Al Balushi Building	Mr. Al Balushi	Residential	U.A.E.	2007
Pearl Towers	N/A	High-Rise	Bahrain	2007
The Palace Inn	N/A	Hotel	Bahrain	2007



References

exterior lighting design

<u>PROJECT</u>	<u>CLIENT</u>	<u>TYPE</u>	<u>LOCATION</u>	<u>YEAR</u>
Gulf Air Headquarters	Gulf Air	Offices	Bahrain	2007
Capital Centre Hotel	RMJM	Hotel	U.A.E.	2008
Marina 106	N/A	High-Rise	U.A.E.	2008
Kaleidoscope	BEAD	High-Rise	U.A.E.	2009
Santevill	DPG	High-Rise	U.A.E.	2009
Abdul Hadi Manea Private Villas	Q-Light	Residential	Qatar	2012
Princess Noura Beach House	DEP	Residential	KSA	2015
Zaabeel Palace Driveway*	EO/Debbas	Residential	U.A.E.	2015

* Project/Construction Management

References

interior lighting design



<u>PROJECT</u>	<u>CLIENT</u>	<u>TYPE</u>	<u>LOCATION</u>	<u>YEAR</u>
Armani Boutique	Armani	Retail	Lebanon	2006
Al Mutairi Villa	Khaled Al Mutairi	Residential	U.A.E.	2007
La Scelta Restaurant	Owner	Restaurant	U.A.E.	2007
Fakhro Villa	M. Fakhro	Residential	Bahrain	2007
Husseini Villa	Hazem Husseini	Residential	Bahrain	2007
Yateem Villa	Sama Yateem	Residential	Bahrain	2007
Al Saie Villa	Bassem Al Saie	Residential	Bahrain	2007
Al Saie Villa	Nezar Al Saie	Residential	Bahrain	2007
HHS Majid's Office	Engineer's Office (EO)	Offices	U.A.E.	2008
Meraas Dev. Office	Engineer's Office (EO)	Offices	U.A.E.	2008
Meraas Inv. Office	Engineer's Office (EO)	Offices	U.A.E.	2008
HHS Hamdan Al Maktoum Villa	Engineer's Office (EO)	Residential	U.A.E.	2008
DuBiotech (GF, 4 th , 5 th , 18 th , 19 th)	Kling Consult	Offices	U.A.E.	2008
Al Hamra Palace (RAK)	Owner	Hotel (7 Stars)	U.A.E.	2009
HHS Majid Al Maktoum Villa	Engineer's Office (EO)	Residential	U.A.E.	2009
Dominos Pizza	Dominos Pizza	Offices	U.A.E.	2009



References

interior lighting design

<u>PROJECT</u>	<u>CLIENT</u>	<u>TYPE</u>	<u>LOCATION</u>	<u>YEAR</u>
Mr. & Mrs. Tabbah Apartment	Nabil Tabbah	Residential	Lebanon	2010
Patchi - Chocolate Boutique	IMC Catering	Retail	Qatar	2011
Almohannadi Villa	Ibrahim Almohannadi	Residential	Qatar	2012
CK Apartment	ArchiTech Leb	Residential	Lebanon	2013
PR Apartment	ArchiTech Leb	Residential	Lebanon	2013
GK Apartment	ArchiTech Leb	Residential	Lebanon	2014
Mumtaz Duplex	Hands	Residential	Lebanon	2014
EAK Apartment	RaB Architects	Residential	Lebanon	2014
CM Apartment	CM	Residential	Lebanon	2014
Princess Noura Beach House	DEP	Residential	K.S.A.	2015
I.S. Penthouse	L'Atelier Design	Residential	U.A.E.	2015



PATCHI CHOCOLATE BOUTIQUE

SEHEIM BIN HAMAD STREET - DOHA, QATAR

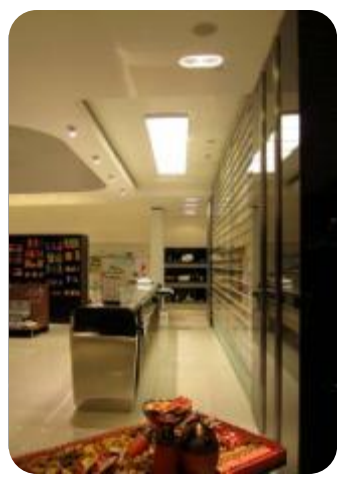


L'AUTRE FABRIQUE



LIGHTING CONSULTANTS:
IP DESIGN
[Interior]

2011





ZAABEEL PALACE DRIVEWAY - INGROUND LIGHTING

ZAABEEL - DUBAI, U.A.E.



EO
1,300 l.m. LED Flexible Strips

PROJECT/CONSTRUCTION MANAGEMENT:
IP DESIGN
[Exterior]

2015





INTERIORS & LIGHTING DESIGN SERVICES

COMPANY PROFILE 2015

Beirut - Lebanon | P.O.Box 45-203

T +961 5 458909

M +961 3 695310

Doha - Qatar

M +974 66 465402

Dubai - U.A.E

M +971 50 3432589

info@ipdesignuae.com